

Improving lives by uniting the caring power of
community in Johnson and Washington Counties.



CELEBRATING
100
1919-2019
YEARS



United Way of Johnson & Washington Counties

IN FY 2019, YOUR UNITED WAY



distributed

1,842

literacy kits

distributed

9,914

donated
children books

facilitated

41

desks being
built

IN FY 2019, **26,632** INDIVIDUALS RECEIVED

MINDFULNESS

For many students, things like public speaking, exams, athletic competitions or social interactions can cause feelings of apprehension and uneasiness. Knowing how to manage time, combat stress, and take care of feelings are key components to living a good life. In partnership with area high schools, United Way created student-led Mindfulness Teams for area high schools to provide peer support, lead activities and increase awareness of the benefits of mindfulness strategies.

12 STUDENTS AND
TEACHERS TRAINED



ADOPT A FAMILY

The holiday season is difficult for many families who struggle to meet their basic needs. The United Way Adopt-A-Family program allows businesses, community members and organizations to provide local families, identified by Partner Agencies, with food, necessity items and gifts during the holidays.

16 FAMILIES ADOPTED
(67 PEOPLE)



UNITED WAY OF JOHNSON & WASHINGTON COUNTIES:

CREATES

solutions to local needs through leadership, diverse partnerships and community fundraising

ACTS

in the spirit of compassion, integrity, respect, transparency and accountability

awarded

84

Summerships

helped impact

1,278

individuals
receiving job
training

CRISIS SERVICES

LEADERSHIP DIRECTORY

A collaborative effort between United Way, Iowa City Area Chamber of Commerce and community partners created a region-wide hub of committee, commission and board opportunities for community leaders who want to get involved and enhance the quality of life in the area.

1,498 UNIQUE VISITS
TO WEBSITE

COMMUNITY LEADERS
COMING TOGETHER TO
FILL IMPORTANT POSITIONS
IN THE COMMUNITY

WWW.LEADERSHIPDIRECTORY.ORG

2018 UWJWC PARTNER AGENCY INVESTMENT

| | |
|---|-----------|
| 4 Cs Community Coordinated Child Care | \$33,678 |
| Abbe Mental Health Center | \$34,373 |
| Aging Services, Inc./Pathways Adult Day Health Center | \$37,974 |
| Arc of Southeast Iowa | \$39,381 |
| Big Brothers Big Sisters of Johnson County | \$58,079 |
| CommUnity Crisis Services and Food Bank | \$126,031 |
| Coralville Community Food Pantry | \$14,520 |
| Domestic Violence Intervention Program | \$83,135 |
| Elder Services Inc. | \$41,616 |
| Free Lunch Program | \$13,394 |
| Geriatric & Special Needs Dental Program | \$11,124 |
| Girl Scouts of Eastern Iowa & Western Illinois | \$6,480 |
| Goodwill of the Heartland | \$26,105 |
| Hawkeye Area Community Action Program | \$23,241 |
| Handicare Inc. | \$1,805 |
| Healthy Kids School-based Health Clinics | \$63,000 |
| Hillcrest Family Services | \$6,095 |
| Housing Fellowship | \$22,383 |
| Iowa City Free Medical & Dental Clinic | \$120,657 |
| Iowa Legal Aid | \$37,287 |
| Iowa Valley Habitat for Humanity | \$19,654 |
| Joan Buxton School Children's Aid | \$12,188 |
| National Alliance on Mental Illness-Johnson County | \$9,832 |
| Neighborhood Centers of Johnson County | \$126,906 |
| North Liberty Community Pantry | \$31,918 |
| Prelude Behavioral Services | \$38,525 |
| Rape Victim Advocacy Program | \$28,566 |
| Shelter House | \$87,323 |
| Table to Table | \$52,573 |
| United Action for Youth | \$76,825 |
| Visiting Nurse Association | \$57,724 |

TOTAL

\$1,342,390



RECRUITS

people and organizations with passion, expertise and resources from across the community

ENGAGES

donors and volunteers in meaningful relationships and collaborative experiences

MARK NOLTE, Board Chair
President, Iowa City Area
Development Group

**GABE AGUIRRE, Community
Investment Chair**
General Manager, Learfield's
Hawkeye Sports Properties

GARY BARTA, Past Chair
Henry B. and Patricia B. Tippie
Director of Athletics Chair, UI

**BEN CLARK, Resource
Development Chair**
President & Chief Operating
Officer, IDx, LLC

JIM CONARD
Eastern Iowa Market President,
West Bank

MATT DEGNER
Assistant Superintendent, Iowa
City Community School District

SARAH FISHER GARDIAL
Dean, Henry B. Tippie College
of Business, University of Iowa

**GEOFF FRUIN, Treasurer,
Internal Operations Chair**
City Manager, City of Iowa City

**KELLY HAYWORTH,
Strategic Planning Chair**
City Administrator, City of
Coralville

TODD MEANS
Senior Vice President, Iowa
City Market President,
MidWestOne Bank

STEVE OLSON
Retired, Washington County
Market President, CBI Bank
& Trust

MARTEN ROORDA
CEO, ACT, Inc.

MELISSA SHIVERS
VP Student Life, University of
Iowa

JACKI TOWNSEND
Site Human Resources Leader,
P&G Iowa City Oral Care

JON WEIH
Director, Kirkwood Regional
Center at University of Iowa,
Kirkwood Community College

NANCY WILLIS
Attorney, Willis & Willis

**STU MULLINS, Agency
Representative**
Executive Director, United
Action for Youth

| | |
|---|--------------------|
| Companies Invested Corp. Gifts | 102 |
| Total Amount of Corp. Gifts | \$412,625 |
| Top Tier Companies Raised | \$1,496,592 |
| Non-Workplace Contributors Increase | \$48,310 |
| Self Identified Loyal Contributors | 148 |
| Community & Special Events Raised | \$121,511 |
| Contributions Directly to Endowment Funds | 5 |
| Leadership Donors | 386 |
| TOTAL COMMUNITY INVESTMENT | \$2,140,775 |

VALUE OF VOLUNTEER HOURS

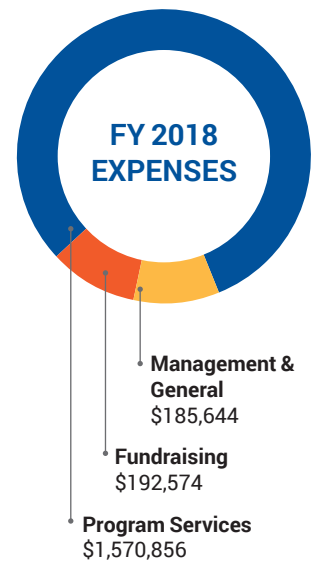
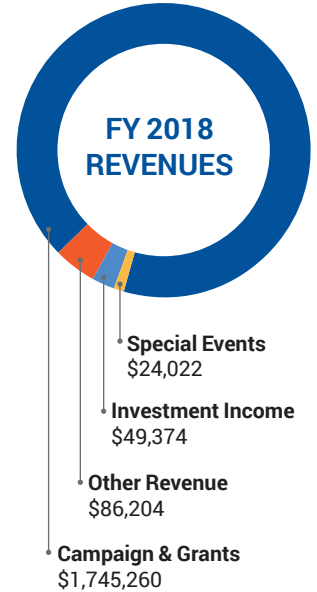
| | |
|-----------------------------------|----------|
| Literacy Kit Volunteers | \$46,257 |
| UI Student Athletes Day of Caring | \$15,740 |
| Get Moving for Healthy Kids Walk | \$2,407 |
| P&G Deployment Day | \$14,258 |
| RAGBRAI | \$27,036 |
| FRY Fest & gran GABLE | \$11,654 |
| Build Me A Learning Space | \$3,963 |
| Iowa City Book Festival | \$1,160 |
| Levitt United | \$4,099 |
| Downtown District Holiday | \$3,197 |
| MLK Day of Service | \$11,111 |
| One Book Two Book Festival | \$963 |

Volunteer Hours Donated **86,449**

Workplaces Engaged In Service **36**

Community Volunteers **4,449**

UI Student Volunteers **634**



Visit unitedwayjwc.org
for the complete
financial review.



(319) 337-8657
volunteercenterjwc.org



1150 5th Street
Suite 290
Coralville, IA 52241

(319) 338-7823
unitedwayjwc.org