



**COMMUNITY GOAL:** Residents are prepared for and able to recover from disasters & other adversity

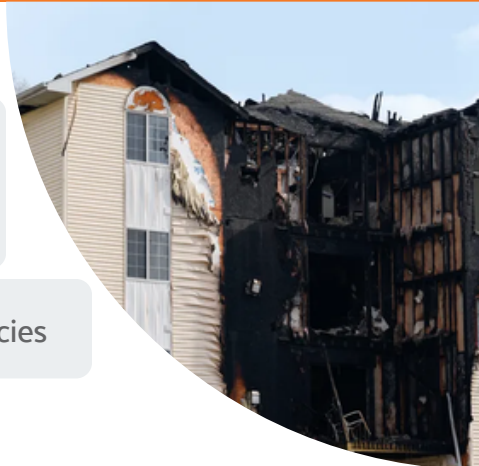
**KEY MEASURES OF PREPAREDNESS IN OUR COMMUNITY:**



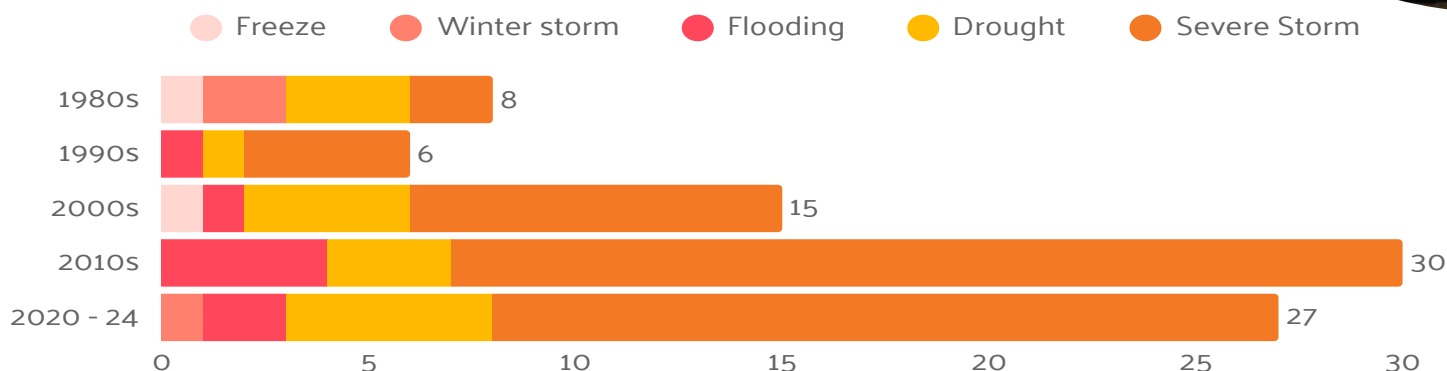
Some area households have **no or limited internet access** to rely on for guidance before or during emergencies; **low-income households are more likely to lack access**



Some area residents **cannot easily leave their homes** during emergencies



**BILLION-DOLLAR DISASTERS IN IOWA BY TYPE, 1980-2024**



**SELECT FINDINGS FROM HEAT VULNERABILITY SURVEY OF JOHNSON COUNTY RESIDENTS**



said the **cost of electricity** prevents them from using their air conditioning



said concern about **greenhouse gases** prevents them from using air conditioning



**work outdoors** in some capacity (most during the daytime)



work indoors in a location **without air conditioning**

**SHARE OF ADULTS WHO LACKED RELIABLE TRANSPORTATION IN THE LAST YEAR**

**5.9%**

in Johnson County

**6.4%**

in Washington County

**HOW WE WILL MOVE CLOSER TO OUR GOALS:**

- Enhance emergency preparedness and response through improved collaboration among community-based organizations and local emergency management in a cross-sector approach
- Expand the number of neighborhoods with disaster plans and strategies and the number of people trained in resilience “work”



# IMPACT AREA Community Resilience

**COMMUNITY GOAL:** Residents feel connected to their neighborhood and the broader community

## KEY MEASURES OF RESILIENCE IN OUR COMMUNITY:



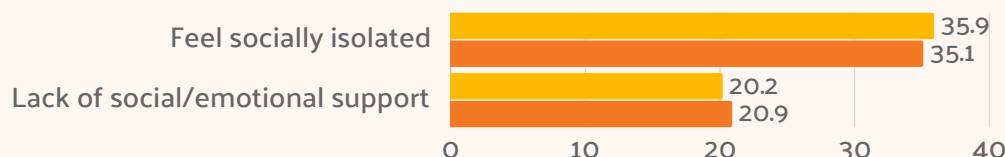
Johnson County lags state & nation in presence of social associations; Washington measures above



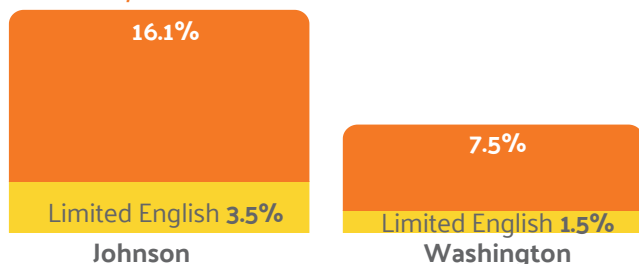
New arrivals to our community may need **extra language support** to build community connections and knowledge

## PERCENT OF ADULTS REPORTING THEY FEEL SOCIALLY ISOLATED OR LACK SOCIAL/EMOTION SUPPORT

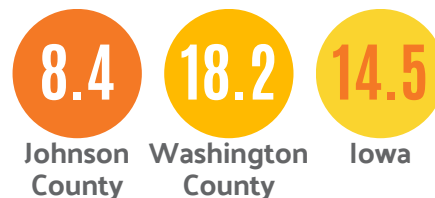
● Johnson Co.  
● Washington Co.



## SHARE OF HOUSEHOLDS SPEAKING A LANGUAGE OTHER THAN ENGLISH & SHARE THAT ARE LIMITED ENGLISH-SPEAKING, JOHNSON AND WASHINGTON COUNTIES



## MEMBERSHIP ORGANIZATIONS PER 10,000 PEOPLE



Regionwide,  
**2,509**  
students were receiving English Language Learners services

## HOW WE WILL MOVE CLOSER TO OUR GOALS:

- Increase number of **neighborhood hubs** in Iowa City and increase the share of people who engage with their neighborhood groups to **increase stronger community connections**
- **Increase community awareness of resources**, making certain those resources are **culturally & linguistically accessible** and **recognizable** within the different communities being served

## UNITED WAY'S ROLE IN COMMUNITY RESILIENCE

### FUND & COLLABORATE

Strong, resourced communities are better able to build back from adversity. United Way strengthens Community Resilience by **bringing people and organizations together** to address challenges and create lasting solutions. Through our extensive network of **nonprofits, businesses and community leaders**, we help our community **understand problems, co-create solutions** and ensure accountability for results. We lead the **Community Organizations Active in Disaster (CoAD)**, ensuring a coordinated response to local crises, and operate 211, a vital helpline that connects individuals to essential resources like housing, food, and crisis support. By leveraging partnerships and resources, we build a stronger, more resilient community that can adapt and thrive in the face of challenges.

### ADVOCATE & EDUCATE

At United Way, we believe financial stability is the foundation for a thriving community. Yet, 40% of Johnson and Washington County individuals and families – facing barriers to stable employment, affordable housing, and essential resources – struggle to make ends meet.

We advocate for access to affordable housing and child care to help individuals build long-term financial security. We advocate for an increase to the Child Care Assistance reimbursement rates, to increase access to quality child care and promote stabilization in the child care workforce.