



COMMUNITY GOAL: Residents are prepared for and able to recover from disasters & other adversity

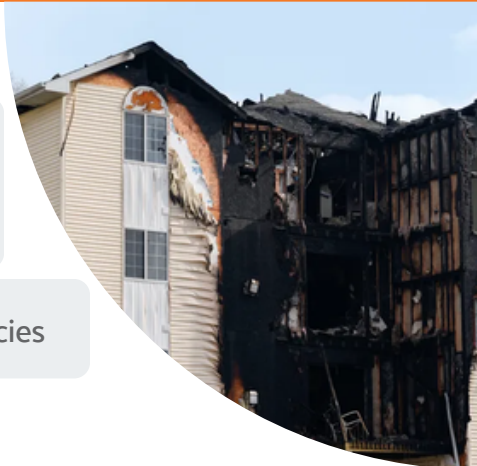
KEY MEASURES OF PREPAREDNESS IN OUR COMMUNITY:



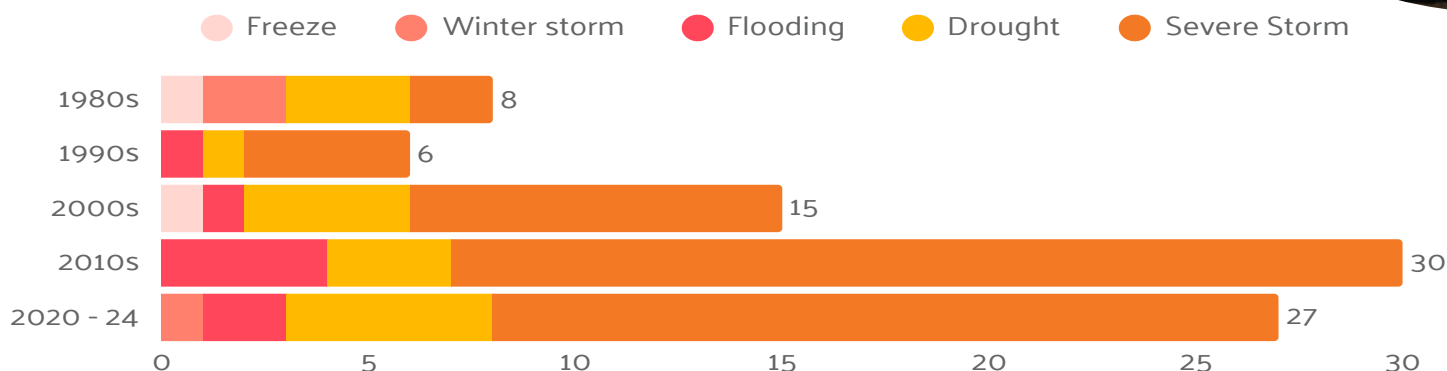
Some area households have **no or limited internet access** to rely on for guidance before or during emergencies; **low-income households are more likely to lack access**



Some area residents **cannot easily leave their homes** during emergencies



BILLION-DOLLAR DISASTERS IN IOWA BY TYPE, 1980-2024



SELECT FINDINGS FROM HEAT VULNERABILITY SURVEY OF JOHNSON COUNTY RESIDENTS



said the **cost of electricity** prevents them from using their air conditioning



said concern about **greenhouse gases** prevents them from using air conditioning



work outdoors in some capacity (most during the daytime)



work indoors in a location **without air conditioning**

SHARE OF ADULTS WHO LACKED RELIABLE TRANSPORTATION IN THE LAST YEAR

5.9%

in Johnson County

6.4%

in Washington County

HOW WE WILL MOVE CLOSER TO OUR GOALS:

- Enhance emergency preparedness and response through improved collaboration among community-based organizations and local emergency management in a cross-sector approach
- Expand the number of neighborhoods with disaster plans and strategies and the number of people trained in resilience “work”



IMPACT AREA Community Resilience

COMMUNITY GOAL: Residents feel connected to their neighborhood and the broader community

KEY MEASURES OF RESILIENCE IN OUR COMMUNITY:



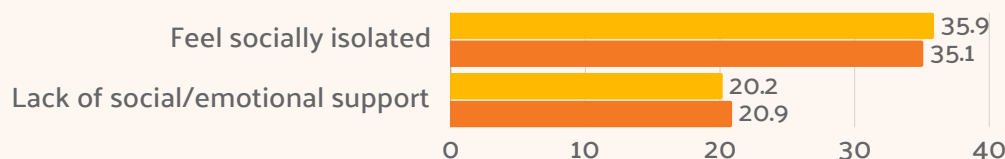
Johnson County lags state & nation in presence of social associations; Washington measures above



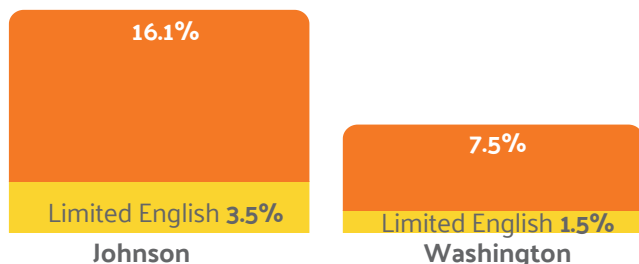
New arrivals to our community may need **extra language support** to build community connections and knowledge

PERCENT OF ADULTS REPORTING THEY FEEL SOCIALLY ISOLATED OR LACK SOCIAL/EMOTION SUPPORT

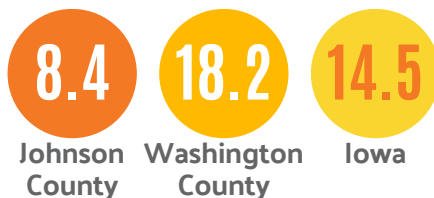
● Johnson Co. ● Washington Co.



NUMBER OF HOUSEHOLDS SPEAKING A NON-ENGLISH LANGUAGE AND SHARE THAT ARE LIMITED-ENGLISH SPEAKING



MEMBERSHIP ORGANIZATIONS PER 10,000 PEOPLE



Regionwide,

2,509

students were receiving English Language Learners services

HOW WE WILL MOVE CLOSER TO OUR GOALS:

- Increase number of **neighborhood hubs** and increase the share of people who engage with their neighborhood groups to foster **stronger community connections**
- Increase **community awareness of resources**, making certain those resources are **culturally & linguistically accessible** and **recognizable** within the different communities being served

UNITED WAY'S ROLE IN COMMUNITY RESILIENCE

FUND & COLLABORATE

Strong, resourced communities are better able to build back from adversity. United Way strengthens Community Resilience by **bringing people and organizations together** to address challenges and create lasting solutions. Through our extensive network of **nonprofits, businesses and community leaders**, we help our community **understand problems, co-create solutions** and ensure accountability for results. We lead the **Community Organizations Active in Disaster (COAD)**, ensuring a coordinated response to local crises, and operate 211, a vital helpline that connects individuals to essential resources like housing, food, and crisis support. By leveraging partnerships and resources, we build a stronger, more resilient community that can adapt and thrive in the face of challenges.

ADVOCATE & EDUCATE

We recognize that climate change disproportionately impacts vulnerable populations, threatening housing stability, financial security and overall well-being. A resilient community is one that can adapt, withstand and recover from climate-related challenges while ensuring all individuals have access to essential resources.

We advocate for **climate-resilient housing, sustainable infrastructure, and neighborhood-based emergency preparedness** to protect communities from extreme weather and environmental disruptions.