

Creating Olson Masks for UI Health Care

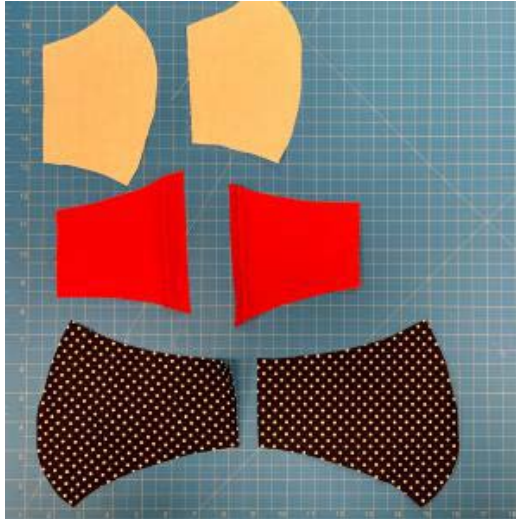
All fabric must be new. Before starting, please launder the fabric in a non-scented/allergen-free detergent with no fabric softener. When drying the fabric, please do not use dryer sheets.

Materials Needed for Each Mask

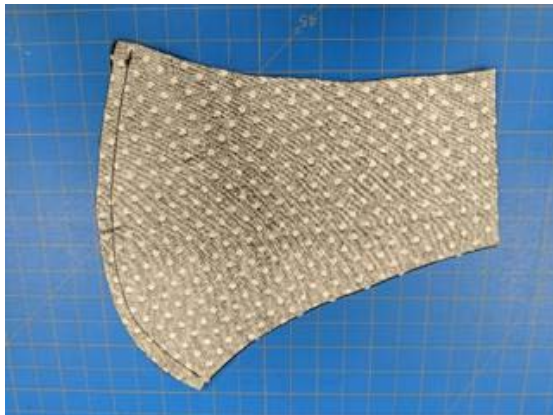
- Paper pattern (below)
- ~ ½ yard of tightly woven polycotton blend fabric
- ~ 25" piece of elastic, elastic cording, or fold over elastic
 - Two (2) elastic hair ties can also be used, but this option is not ideal for long-time wear. Instructions have been including for those needing to use hair ties.
- All-purpose thread
- Scissors

Instructions

1. Using the provided patterns, cut out each shape. You will have six (6) total pieces.



2. Sew *face 1* and *face 2* together along *side 3*.



3. Sew *mouth 1* and *mouth 2* together along *side 3*.



4. On *mouth 1* and *mouth 2*, fold *side 5* over $\frac{1}{4}$ " and sew down.



5. On *cheek 1* and *cheek 2*, fold *side 6* over $\frac{1}{4}$ " and sew down.



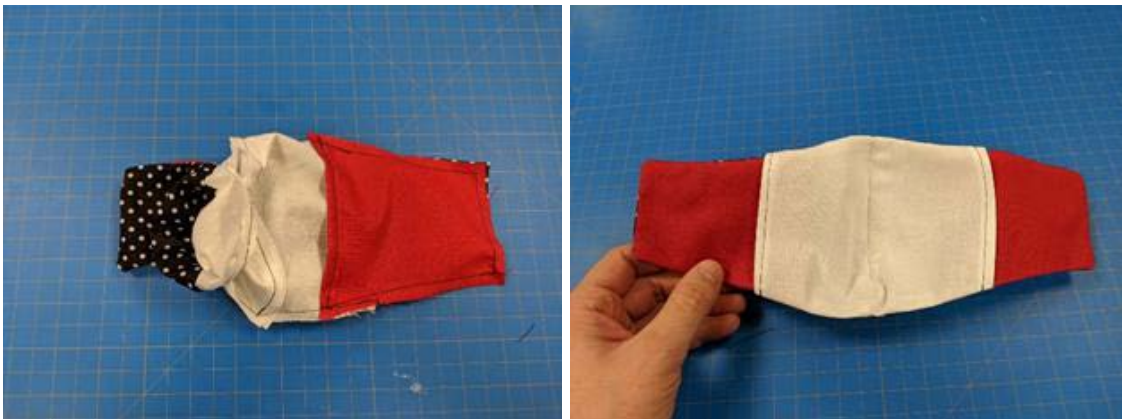
6. Match *cheek 1* and *mouth 1* at the dotted line. Sew a 1" tack at *side 1* and *side 2*, where the two pieces overlap. Repeat this step for *cheek 2* and *mouth 2*.



7. With the fronts of the fabric facing each other, sew along the entire perimeter of the mask.



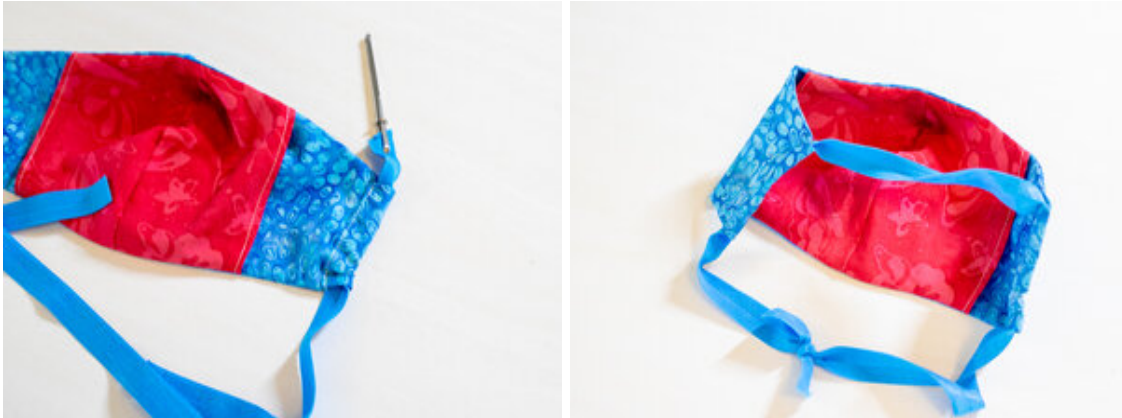
8. Using one of the slits between the mouth and cheek, turn the mask right-side out.



9. Press the mask before adding elastic.

If using elastic hair ties, please continue to Step 12

10. Fold over one side edge about ½” and sew a casing. Do the same for the other side edge.
11. Using a bodkin or safety pin, run the elastic through both casings on the mask. Tie the elastic loosely, this will allow the user to adjust the fit of the elastic by untying and retying it to fit. You’re done!



12. Add a hair tie to each side by folding the fabric on the side edge of the mask over the hair tie and sew. You’re done!



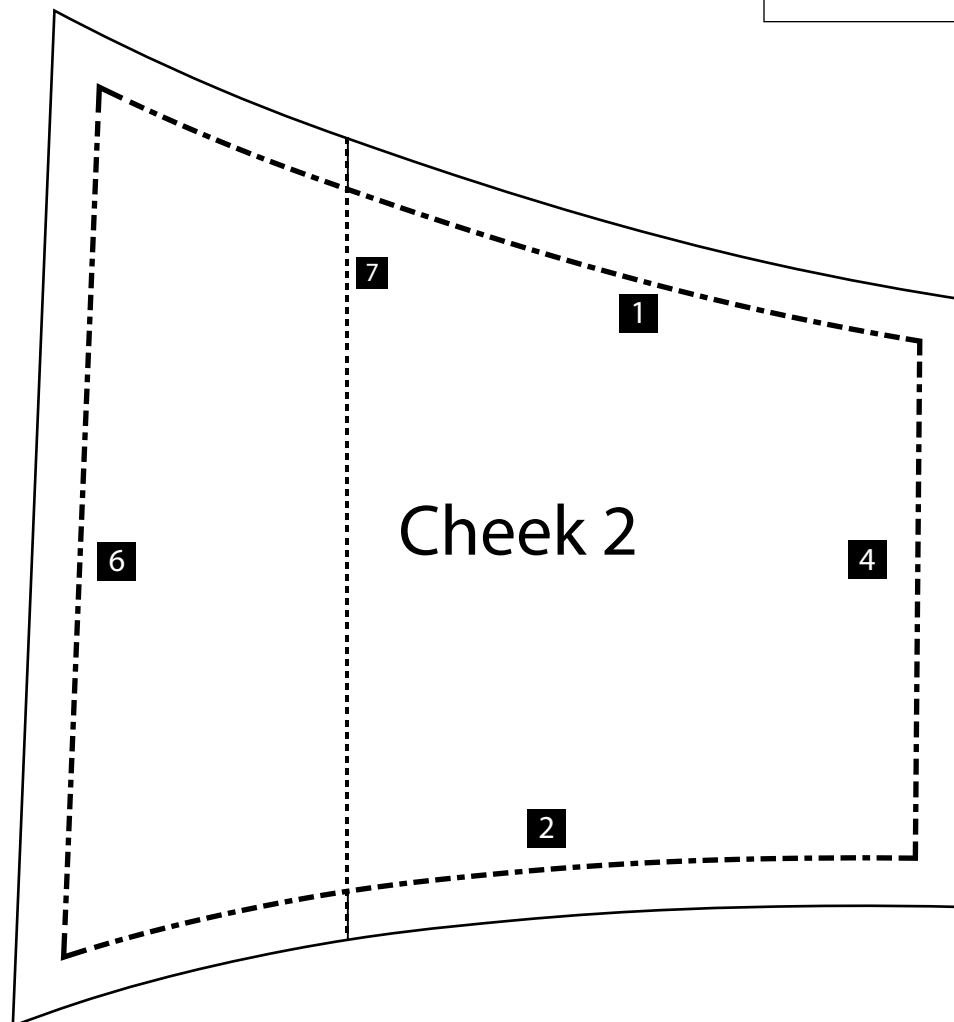
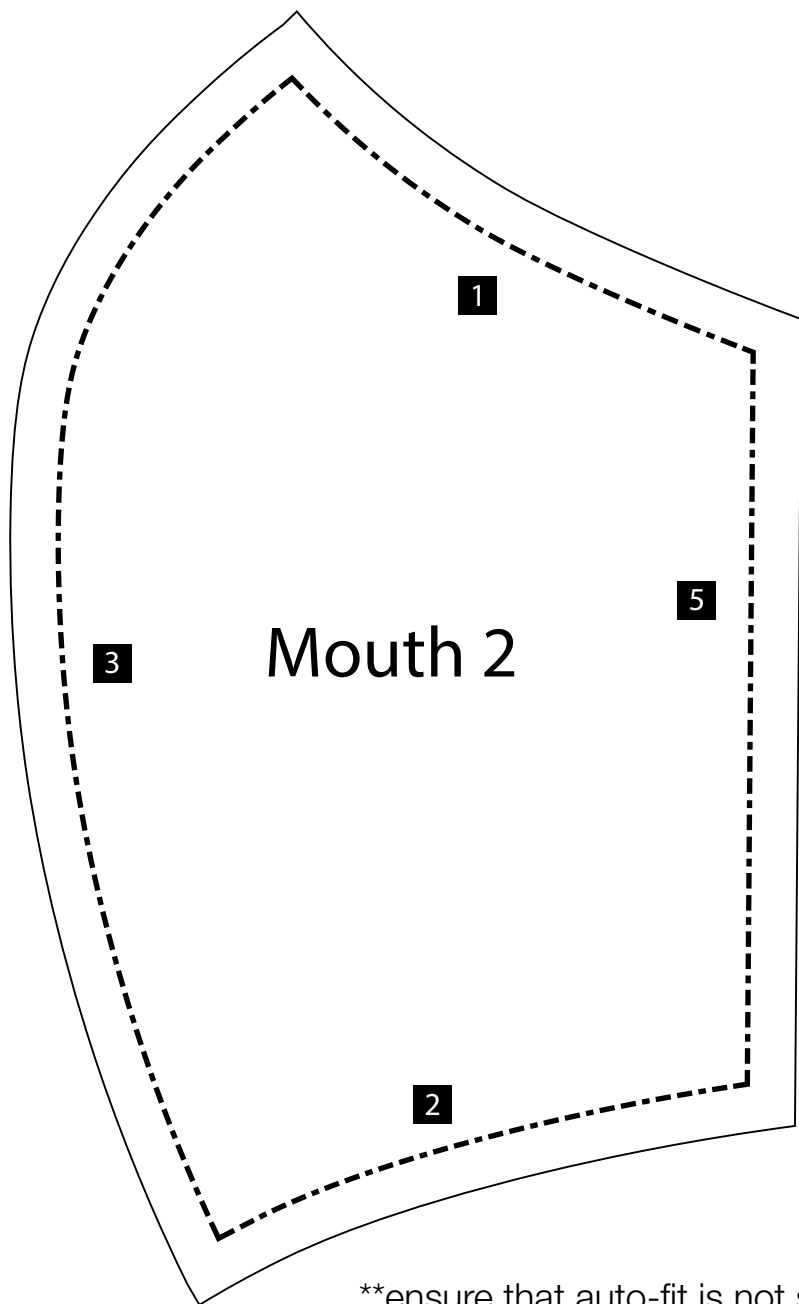
Ready to donate your masks? Please complete a [UI Health Care In-Kind Donation Form](#) and bring a copy with your donation. We have some restrictions in place to protect the health and safety of our patients, visitors, and staff. Donated items that do not meet the guidelines on our [In-Kind Donations page](#) may not be accepted or could be redirected to another charity. **All fabric must be new. Before starting, please launder the fabric in a non-scented/allergen-free detergent with no fabric softener. When drying the fabric, please do not use dryer sheets.**

- All items must come from a smoke-, dust-, pet-, and illness-free environment
- All masks must be made from new materials
- All items must be stored in a non-scented, new plastic bag for delivery

Concierge Services will accept donated items outside the UI Hospitals & Clinics Main Entrance from 8:00 a.m. – 4:30 p.m., Monday thru Friday. Please call them at 319-356-1900 or 319-678-5500 to schedule a donation drop-off. **Please do not enter the Main Entrance with your donated items.** For your safety and the safety of our patients, visitors, and staff, a staff member will meet you at your vehicle to accept your donated items.

Olson Mask - Mouth & Cheek Pattern

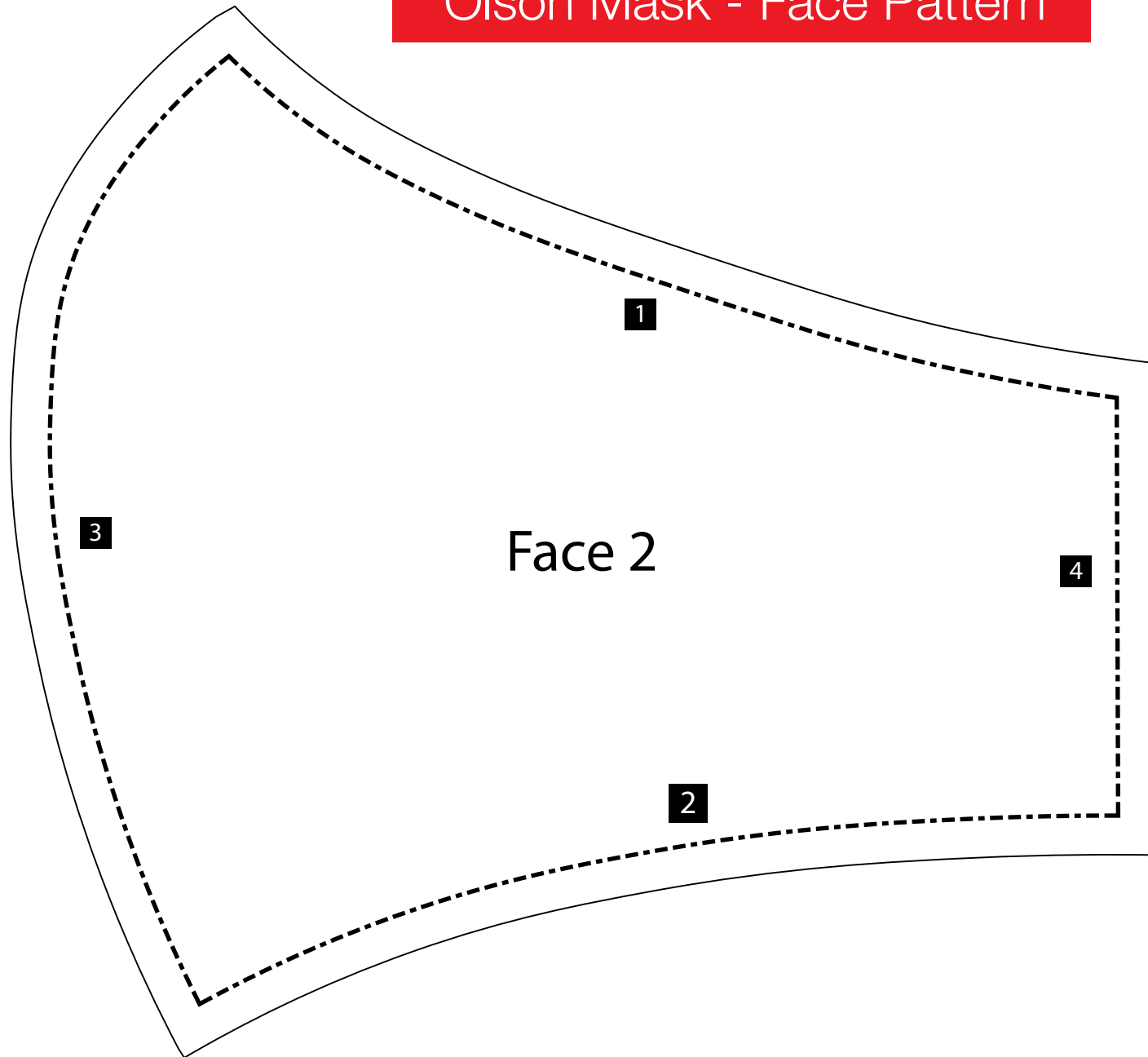
1" x 1"
Test Square



**ensure that auto-fit is not selected when printing to ensure pattern measurements are not altered

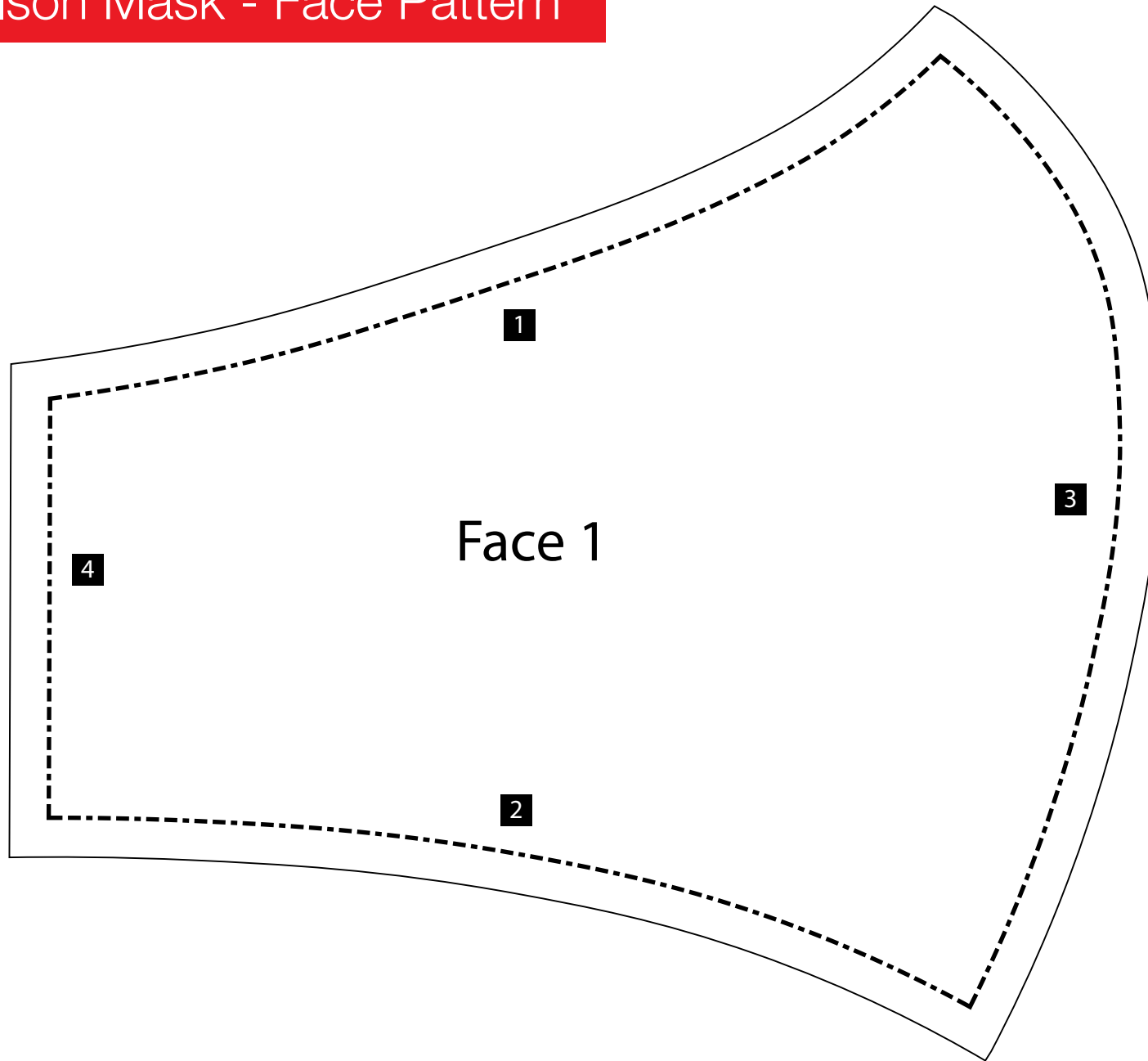
Olson Mask - Face Pattern

1" x 1"
Test Square



**ensure that auto-fit is not selected when printing to ensure pattern measurements are not altered

Olson Mask - Face Pattern



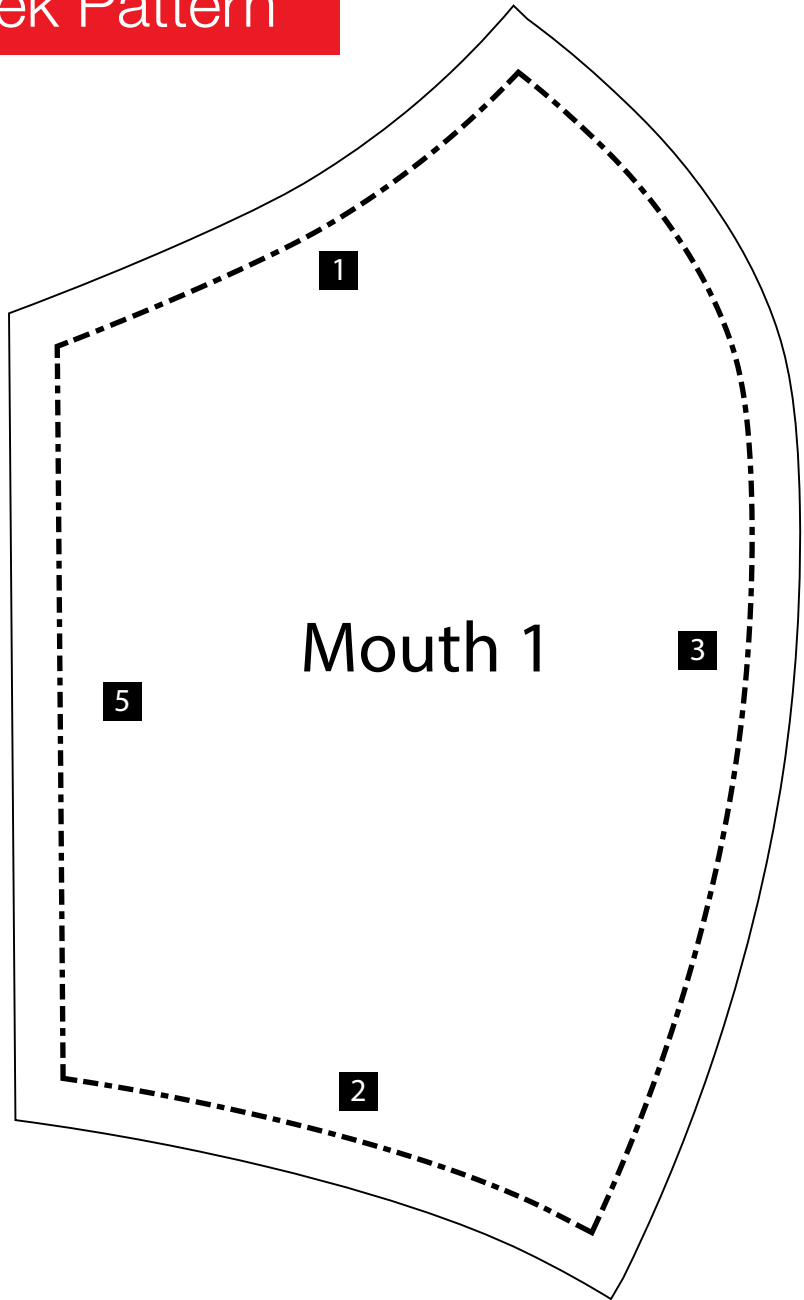
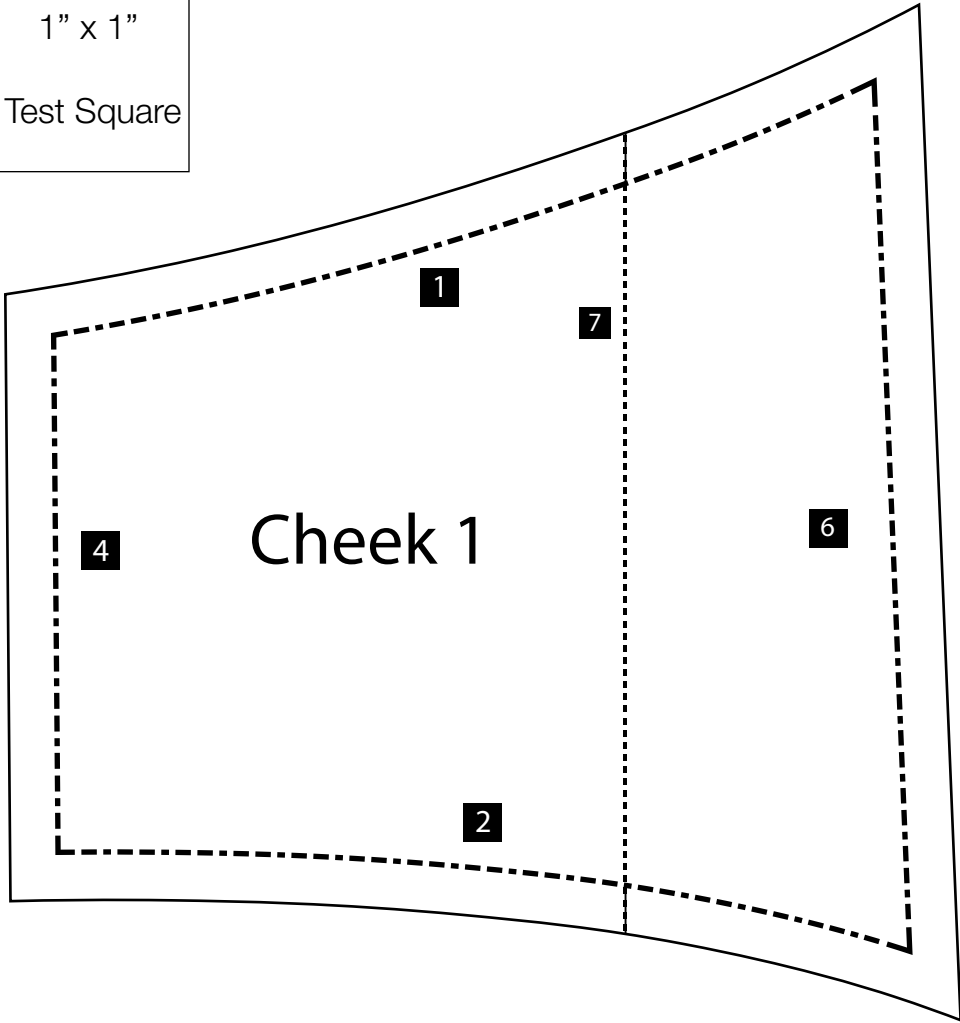
1" x 1"
Test Square

**ensure that auto-fit is not selected when printing to ensure pattern measurements are not altered



Olson Mask - Mouth & Cheek Pattern

1" x 1"
Test Square



**ensure that auto-fit is not selected when printing to ensure pattern measurements are not altered

