



LIVE UNITED

FY 2022 ANNUAL REPORT
UNITED WAY OF JOHNSON &
WASHINGTON COUNTIES



To Our Stakeholders,

2021 was a year that truly illustrated who we are – an organization focused on improving lives by uniting our caring community. We are grateful for all the good things that happened in the past year and feel fortunate to be surrounded by caring individuals, effective leaders, and generous volunteers and donors. In 2021, the people of Johnson & Washington Counties once again stepped up to help our neighbors meet pressing needs. Together we invested over \$2 million in our local non-profit organizations and United Way initiatives. This concentration of funding focused on three specific areas of need:

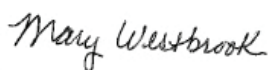
- **Birth through adult education – academic success & independence skills.**
- **Building financial stability – sufficient income & essential support.**
- **Access to healthcare – physical, mental, & emotional well-being & safety.**

We know sustaining critical services around these causes affords the opportunity to provide resources for so many vulnerable individuals and families. We also know people experiencing mental health challenges, and the systems designed to help them, have been pushed to a breaking point during the pandemic. Our work to protect every person's access to mental health services is vital for seniors, adults, youth, and children. We are renewing our commitment to strengthen fractured systems and help our neighbors receive better mental health services and support, but it will take all of us working together.

As shown in this report, our work did not stop with financial support. These pages tell the story of United Way of Johnson & Washington Counties and the collective work we steered in our community. We organized hundreds of volunteers for activities designed to strengthen our community, expanded our 55+ Retired & Senior Volunteer Program (RSVP) footprint, introduced Small Business United 365 as a resource for our neighborhood businesses, continued to fulfill our role as a leader in disaster services, mitigating the ongoing negative impacts of COVID-19 and so much more. United Way takes a bold stand on important local issues and leads with time, money, and people on a change-making scale.

Our community thrives when we Live United. We hope you are as proud of the accomplishments of your United Way this past year as we are. We are approaching 2022 with renewed enthusiasm & vigor, building upon our century of service with strong partnerships and new ideas to ensure a bright future for all.

Thank you for your support!



Mary Westbrook
Interim President & CEO



Jacki Townsend
Board Chair





Our mission is to improve lives by uniting the caring power of community in Johnson and Washington Counties.

UNITED WAY OF JOHNSON & WASHINGTON COUNTIES:

CREATES

solutions to local needs through leadership, diverse partnerships, and community fundraising.

ACTS

in the spirit of compassion, integrity, respect, transparency, and accountability.

RECRUITS

people and organizations with passion, expertise, and resources from across the community.

ENGAGES

donors and volunteers in meaningful relationships and collaborative experiences.



There is no hiding the fact that the COVID-19 pandemic increased stressors that were already present and brought up new ones. Anxiety, depression, and other mental health illnesses can affect anyone. At United Way of Johnson & Washington Counties, we are committed to putting a light on what some perceive as “invisible disorders” and work with our community to provide access to vital support services.

The following pages contain mental health stats we are trying to address.




Summerships

United Way of Johnson & Washington Counties and the Community Foundation of Johnson County are proud to continue their partnership to coordinate the award of "Summerships." Annually 84 Summership scholarships of up to \$250 each are awarded to children (K-12) who qualify for free or reduced lunch and who otherwise could not afford to go to a camp for academics, sports, science, the arts, etc.

COVID-19 Response

As the pandemic has progressed, individuals, organizations and communities have collaborated to find a way to endure. United Way has continued to play an active role in our community. Last year:

- United Way, in partnership with Mercy Iowa City and Towncrest Pharmacy, conducted a virtual discussion, "Why Should I Get Vaccinated?" in April 2021 to answer questions as well as present the facts and dispel some of the fiction centering around the COVID vaccine.
- United Way, in partnership with Johnson County Public Health, University of Iowa Hospitals & Clinics, and Mercy Iowa City conducted a virtual discussion in August 2021, "COVID-19 Update," focused on updating our community on the pandemic, vaccination, the Delta variant, and masking.
- United Way of Johnson & Washington Counties helped connect vaccines to our neighbors disproportionately impacted by COVID-19 barriers. **Through the United Ways of Iowa Vaccine Equity Grant, we were able to invest over \$3,500 in local vaccine programs.**



More than half of Americans report that COVID-19 has had a negative impact on their mental health. In February 2021, **42.2% of adults in Iowa** reported symptoms of anxiety or depression. **25.4% were unable to get needed counseling or therapy.**



OUR IMPACT

Diversity Equity & Inclusion

Our commitment to diversity, equity, and inclusion rests on certain principles that influence our decision-making, guide our interactions with others, and determine the measure of our success. We strive to continually improve our understanding and application of inclusion and equity to address racial disparities in the communities we serve alongside our partners and within our strategies and investments.

Choosing To Challenge

This unique event reflected on the focus topics from United Ways of Iowa's 21 Day Equity Challenge. Community participants joined our panel discussion with four accomplished local leaders to promote equity and inclusivity through their commitment to dismantling barriers.



21 Day Challenge

The 21-Day Equity Challenge was a powerful opportunity to learn about the barriers to opportunity lowans face. Through the 21-Day Equity Challenge, participants joined thousands of other lowans in a journey of discovery, learning, and growth. In addition, we were able to identify what small steps we can take to help create a more equitable community for all.

Holiday Adopt a Family

The Adopt a Family Program allows businesses, community members, groups, and organizations to provide local families with food, necessity items, and gifts during the holidays. Families are identified by service agencies as experiencing extraordinary needs due to health issues, financial instability, or other major circumstances.

147 families adopted

411
children

207
adults

618
total





FryFest

58% of Iowans age 12–17 who have depression **did not receive any care** in the last year.

55+ RSVP

55+ Retired & Senior Volunteer Program (RSVP) is one of the largest volunteer networks in the nation for people 55 and better. Housed locally by United Way of Johnson & Washington Counties, the 55+ RSVP Program serves four counties - Des Moines, Johnson, Muscatine, and Washington and engages community members 55 and better in meaningful volunteer opportunities. Volunteer activities include providing transportation for medical appointments, participating as Pen Pals for local elementary students, and special projects such as making fleece tie blankets, educational kits, and more!

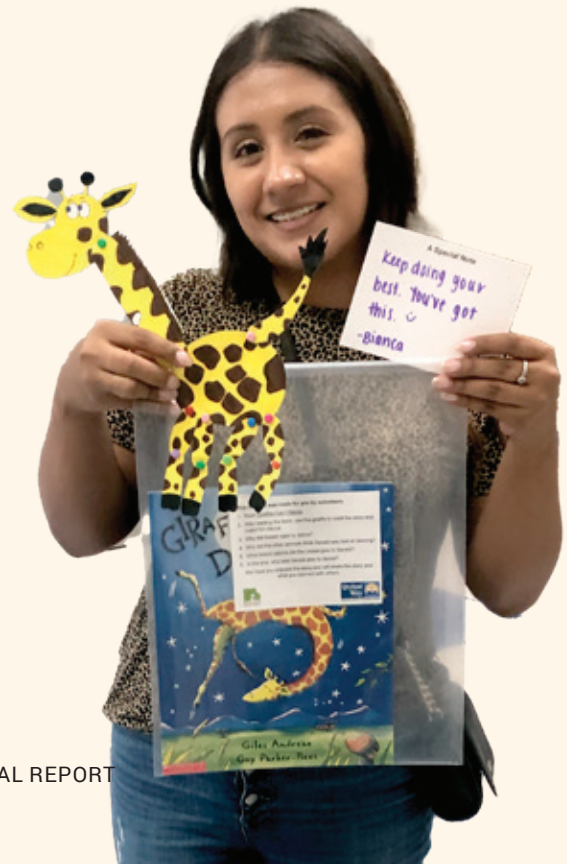


NUMBER OF VOLUNTEERS APRIL 1, 2021 -MARCH 31, 2022	
RSVP 55+ Johnson County	154
RSVP 55+ Des Moines County	84
RSVP 55+ Muscatine County	12
RSVP 55+ Washington County	10
RSVP 55+ Advisory Council	6

Literacy & Learning

Literacy is foundational to all learning experiences and a student’s intellectual growth. Strong literacy skills are not only necessary to achieve academic success inside the classroom, but essential to excelling in all aspects of life beyond the classroom. United Way of Johnson & Washington Counties’ initiatives provide children access to opportunities to strengthen their academic skills through:

- **Literacy Kits-** A literacy kit is a children’s book and an activity designed to make reading interactive and enjoyable for young children. Literacy kits bring books to life and deepen the reading experience for a child.
- **Math Kits-** Math kits help children acquire the foundational skills needed for learning math, while staying engaged and having fun. Kits include Bead Counters to learn base 10 math, Number Sense Sticks to encourage learning numbers as quantity/value, counting sticks to reinforce addition and subtraction and Money Saving Sorting for learning coins and their monetary value, an important basic skill.
- **Pen Pals-** Volunteers are paired with an elementary student and become acquainted through friendly correspondence. This initiative helps students practice the art of writing, increase literacy skills, and build positive relationships.



PARTNER AGENCIES

United Way of Johnson & Washington Counties is committed to investing in local organizations to produce measurable results. We partner with 30 fully vetted, ethically practicing nonprofit organizations that deliver services effectively and efficiently to support community needs. In addition to financial support, we connect local agencies to resources from diapers to school supplies and so much more.



Items donated to UWJWC for partner agency distribution

2,647 people in Iowa are homeless and **1 in 5** live with a serious mental illness.

2021 UWJWC Partner Agency Investment

BIRTH THROUGH ADULT EDUCATION

4Cs Community Coordinated Child Care	\$37,427
The Arc of Southeast Iowa	\$33,644
Big Brothers Big Sisters of Johnson County	\$55,978
Girl Scouts of Eastern Iowa and Western Illinois	\$2,959
Hawkeye Area Community Action Program (HACAP)	\$23,335
Joan Buxton School Children's Aid	\$10,266
Neighborhood Centers of Johnson County	\$130,932
United Action for Youth	\$83,670

BUILDING FINANCIAL STABILITY

CommUnity Crisis Services and Food Bank	\$124,099
Coralville Community Food Pantry	\$23,516
Free Lunch Program	\$16,494
Goodwill of the Heartland	\$26,857
The Housing Fellowship	\$25,805
Iowa Legal Aid	\$38,256
Iowa Valley Habitat for Humanity	\$19,371
North Liberty Community Pantry	\$38,435
Shelter House	\$97,616
Table to Table	\$60,232

ACCESS TO HEALTHCARE

Abbe Mental Health Center	\$56,850
Aging Services, Inc./Pathways Adult Day Health Center	\$36,559
Domestic Violence Intervention Program	\$87,967
Geriatric & Special Needs Dental Program	\$8,751
Healthy Kids: School-Based Health Clinics	\$67,462
Hillcrest Family Services	\$6,433
Iowa City Free Medical & Dental Clinic	\$125,925
Meals on Wheels of Johnson County, a program of Horizons	\$26,317
National Alliance on Mental Illness - Johnson County	\$9,894
Prelude Behavioral Services	\$30,680
Rape Victim Advocacy Program (RVAP)	\$28,279
Visiting Nurse Association	\$23,046

TOTAL

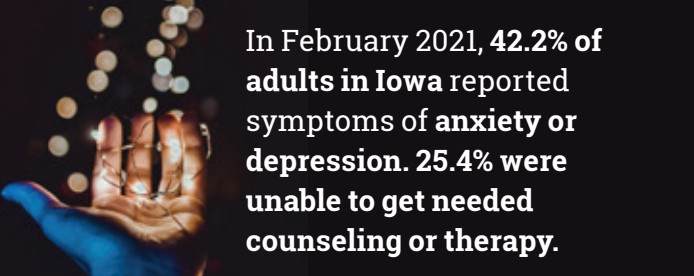
\$1,357,055





Small Business United 365

This year, United Way of Johnson & Washington Counties launched our Small Business United 365 (SBU365). This group of local, small business owners are committed to investing in ongoing, impactful, and meaningful work through United Way. It is an initiative to make volunteering and philanthropy easier, and more rewarding for small businesses throughout Johnson & Washington Counties. Members include Bankers Advertising/Tru Art, *Corridor Business Journal*, Locals Love Us-Iowa City, MELD Marketing Inc., Neumann Monson Architects, United Iowa Financial, and World of Bikes.

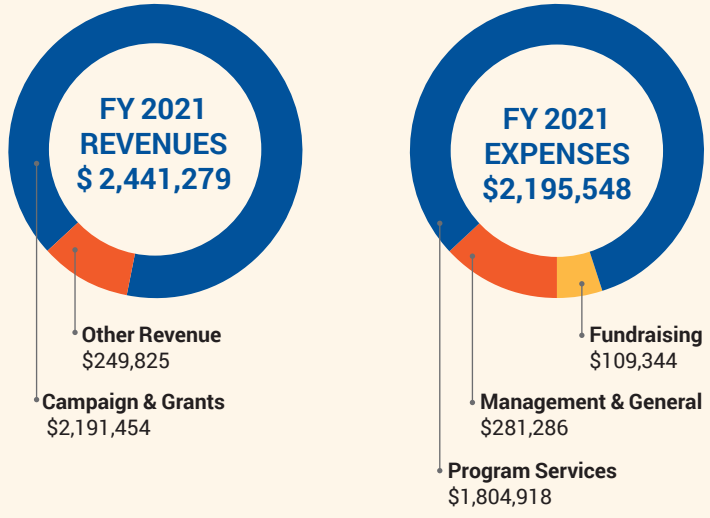


In February 2021, **42.2%** of adults in Iowa reported symptoms of **anxiety** or **depression**. **25.4%** were unable to get needed counseling or therapy.

“Our community has grown to trust in the work of the United Way... And honestly, they have been the glue that holds people together.”

LOU MONTGOMERY

Financial Report



Annual Campaign Support

Companies Invested Corporate Gifts	87
Total Amount of Corporate Gifts	\$443,4870
Top Tier Companies Raised	\$1,400,474
Self Identified Loyal Contributors	163
Community & Special Events Raised	\$104,954
Leadership Donors	362

2021-22 ANNUAL CAMPAIGN \$ 2,023,145

A complete financial review can be found at UnitedWayJWC.org





RIGHT:

Dr. Barbara Wilson-President, University of Iowa
Dan Clay-2021-22 UWJWC Campaign Co-Chair
Janet Lyness-2021-22 UWJWC Campaign Co-Chair



2021-22 Campaign Cabinet

CAMPAIGN CO-CHAIRS

Dan Clay

University of Iowa

Janet Lyness

Johnson County

CABINET

Jim Bethea

University of Iowa Center for Advancement

David J. Bright

Pugh Hagan Prahm PLC

Mary Lou Close

Community Volunteer

Geoff Fruin

City of Iowa City

Alison Ames Galstad

Coralville Public Library

Pat Heiden

Johnson County

Susan Horan

University of Iowa Center for Advancement

Sam Jarvis

Johnson County Public Health

Rebecca Neades

GreenState Credit Union

Aaron Schaefer

Hills Bank

Heather Wisman

MidWestOne Bank

Ada Woo

Ascend Learning

ADJUNCT CABINET MEMBERS

Bob & Sue Dvorsky

Community Volunteers

Susie Poulton

Community Volunteer



1,821,280 people in Iowa live in a community that **does not have enough mental health professionals.**



Power of the Purse+

The Power of the Purse+ is United Way of Johnson & Washington Counties' signature event to raise money to help the most vulnerable among us. The 2021 event was hosted through our virtual auction site and filled with even more purses, wine, and gift baskets than ever before! This year's Power of the Purse+ event saw record-breaking results and contributed over \$27,000 to our campaign.



Advance Auto Parts Car Show

Our 4th Annual Advance Auto Parts Car Show was another success! Entries of classic, muscle, and custom cars and motorcycles filled the Advance Auto Parts Coralville parking lot. Event guests voted on their Best In Show entry, with a 1981 DeLorean taking home the prize.



Iowa Heartlanders

In 2021 we welcomed the Iowa Heartlanders to our community. United Way partnered with Advance Auto Parts and the Heartlanders for a MARVEL SUPERHERO game. **Over 2,700 fans filled the Xstream Arena to cheer on the Iowa Heartlanders and raise \$1,763 for United Way.**



COMMUNITY CELEBRATION

Our annual Community Celebration highlights our community's commitment to LIVE UNITED. On April 13, 2022, over 100 guests joined this special event in person or virtually from the Xstream Arena in Coralville. Together, we celebrated the many ways in 2021 our neighbors gave with compassion, volunteered despite the challenges from the ongoing pandemic, and advocated to create positive change in our community. Special recognition was given to:

- **ACT, Inc.** as the Company of the Year
- **Matt Brown** as the Volunteer of the Year
- **Barbara Vinograde**, Iowa City Free Medical & Dental Clinic with the Bill Reagan Agency Executive of the Year
- **Tom Rocklin & Barbara McFadden** and **RSM US LLP** with Spirit of Philanthropy Awards
- **MELD Marketing & Neumann Monson Architects** and **Advance Auto Parts & Iowa Heartlanders** with Outstanding Achievement Awards
- **City of Coralville** and **Johnson County** with Game-Changer Awards in Financial Stability
- **The GuideLink Center** and **P&G Oral Care** with Game-Changer Award in Health
- **The University of Iowa Center for Advancement** with Game-Changer Award in Education



ABOVE LEFT: Matt Brown

ABOVE RIGHT: Tom Rocklin/Barbara McFadden

LEFT: The GuideLink Center



Iowa Heartlanders & Advance Auto Parts



Neumann Monson Architects & MELD Marketing



P&G Oral Care



FAR LEFT: Barbara Vinograde & Team, Iowa City Free Medical & Dental Clinic



FY 2022 Board of Directors

- Gabe Aguirre, Board Chair**
Learfield's Hawkeye Sports Properties
- Charlie Astorino, Board Member**
ACT, Inc.
- Matt Brown, Board Member**
CBI Bank & Trust
- Dan Clay, Board Member**
University of Iowa
- Jim Conard, Board Member**
West Bank
- Terri Davis, Board Member**
Shuttleworth & Ingersoll, P.L.C.
- Matt Degner, Strategic Planning Chair**
Iowa City Community School District
- Len Devaisher, Resource Development Chair, MidWestOne Bank**
- Suresh Gunasekaran, Board Member**
University of Iowa Hospitals & Clinics
- Ryan Heiar, Board Member**
City of North Liberty
- Michael Lehman, Board Member**
United Iowa Financial
- Brooke Strahn-Koller, Board Member**
Kirkwood Community College
- Ryan Swartz, Board Member**
CIVCO Medical Solutions
- Liz Tovar, Board Member**
University of Iowa
- Jacki Townsend, Vice Chair**
P&G Oral Care
- Marsha Wolff, Community Impact Chair**
GreenState Credit Union
- Lynsey Yokum, Treasurer & Internal Operations Chair**
Magnolia Business Solutions, LLC
- Kaila Rome, Agency Rep., Ex-Officio Non-Voting, North Liberty Community Pantry**

IN MEMORIAM

Pat Hobson
U.S. Bank

* Mental health data from February 2021. For full citations, visit: nami.org/mhpolicystats.

The recognition given to those listed in this annual report is one small way to thank our volunteers and contributors. Every effort has been made to make this report accurate. If your name has been misspelled, omitted, or misplaced, we sincerely apologize. Please contact the United Way of Johnson & Washington Counties office with corrections or any questions you might have. Thank you for your continued support.

United Way of Johnson & Washington Counties' Staff Directory

LEADERSHIP

Mary Westbrook
Interim President & CEO

DEVELOPMENT

Trisha Smith
Vice President, Development & Marketing

FINANCE

Terri Anderson
Chief Financial Officer & Vice President of Operations

Carol Rowland
Finance & Pledge Services Coordinator

Amy Schaefer
Administrative Assistant

IMPACT

Patti Fields
Vice President, Community Impact & Engagement

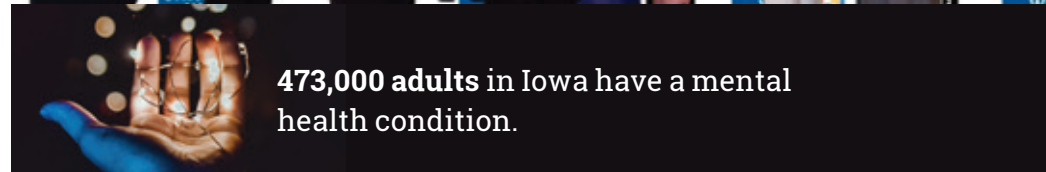
Wendy Nolan
Community Strategies Coordinator
55+ RSVP Coordinator – Johnson County

55+ RSVP

Megan Giardino
55+ RSVP Coordinator – Washington County

Mary Maine
55+ RSVP Coordinator – Des Moines County

Megan Mier
55+ RSVP Coordinator – Muscatine County



473,000 adults in Iowa have a mental health condition.

United Way of Johnson & Washington Counties, Inc.
1150 5th St., Ste. 290
Coralville, IA 52241

Office (319) 338-7823

www.UnitedWayJWC.org

 United Way of Johnson & Washington Counties

 UWayJWC

 uwayjwc



Corporate and Employee Gifts

The number of leadership gifts (\$1,000 and above) are in parentheses.

*Does not include out of area locations.

\$200,000 AND ABOVE

University of Iowa (71)

\$150,000 AND ABOVE

P&G Oral Care (22)

\$100,000 AND ABOVE

ACT, Inc. (9)*

GreenState Credit Union (13)*

P&G Beauty (16)

\$75,000 AND ABOVE

GEICO Insurance Co. (10)

\$50,000 AND ABOVE

City of Iowa City (23)

MidWestOne Bank (13)*

Scheels (1)

University of Iowa Center for Advancement (9)

\$25,000 AND ABOVE

CIVCO Medical Solutions (5)

Hills Bank (6)*

MidAmerican Energy Company (3)

RSM US LLP (2)

\$15,000 AND ABOVE

Johnson County (6)

U.S. Bank (1)

United Iowa Financial (1)

\$10,000 AND ABOVE

City of Coralville (3)

First Interstate Bank North Liberty (3)

Meardon, Sueppel & Downer, P.L.C. & Security Abstract Company (2)

Neumann Monson Architects, P.C. (2)

Target - Coralville

United Parcel Service (2)

United Way of Johnson & Washington Counties (4)

Wells Fargo Bank - Des Moines (1)

\$5,000 AND ABOVE

Bankers Advertising/Tru Art (1)

CBI Bank & Trust (1)

City of North Liberty (1)

Costco Wholesale (2)

Integrated DNA Technologies

Iowa City Community School District (6)

Mortenson (1)

OPN Architects (1)

Paulson Electric (2)

Shive-Hattery Architecture + Engineering (1)

West Bank (1)

\$2,000 AND ABOVE

Al Grady Charitable Fund of the Hills Bank Donor Advised Gift Fund

Alliant Energy

Centro Inc. (1)

Dakota Red Corporation

Domestic Violence Intervention Program - UWJWC Partner Agency (1)

First Trust & Savings Bank

General Mills (1)

Goodwill of the Heartland - UWJWC Partner Agency (1)*

Hawkeye Area Community Action Program - UWJWC Partner Agency (2)

John Deere (1)

L.L. Pelling (2)

McComas-Lacina Construction LC (1)

Relion Insurance Solutions

River Products Company & Petroleum Services Co., LLC

Target - Iowa City

Veridian Credit Union

Watts Group

\$1,000 AND ABOVE

Blank & McCune The Real Estate Co. (1)

Cargill Animal Nutrition (1)

Deery Brothers Ford Lincoln of Iowa City

Edward Jones - Todd Nash (1)

Grinnell Mutual Reinsurance Company

Iowa City/Coralville Area Convention & Visitors Bureau (1)

Iowa Legal Aid - UWJWC Partner Agency (1)

JC Penney

Learfield's Hawkeye Sports Properties (1)

Lepic-Kroeger, Realtors

Locals Love Us

Miron Construction Co., Inc. (1)

Neighborhood Centers of Johnson County - UWJWC Partner Agency

Oaknoll Retirement Residence (1)

Pearson (3)

Prelude Behavioral Services

Principal Financial Group

Shelter House - UWJWC Partner Agency

Shuttleworth & Ingersoll PLC (1)

Skogman Realty

Table to Table - UWJWC Partner Agency (1)

The Arc of Southeast Iowa - UWJWC Partner Agency

Wal-Mart

West Music Company, Inc. (1)

World of Bikes

Loyal Contributors

Loyal Contributors are generous and committed individuals who have given to the United Way for 25 years or more.

Bill & Jenny Anciaux

Barrie Anderson

Charlie Anderson

Dayna Ballantyne

Thomas K. & Sandra S. Bauer

John Bixler

Jackie Blank

Warren & Maryellen Boe

Mike Bouldin

Robert & Vida Brenner

Delmar & Clista Brown

Kylie Buddin

Rosemarie Bullington

Charles & Heide Bursch

Mary Byers

Angie & David Bywater

Willis & Linda Bywater

Dan Champion

Joe & Meg Corbin

RenElla Crawford

Thomas & Shari Davis

William & Joanne

Dochterman

Kristie & Patrick Doser

Cindy Dunlap

Jane Engeldinger & Michael W. O'Hara

Charles & Margaret Felling

Patti Fields

Dorina Forkenbrock

Robert & Sylvia Forsyth

Tracey Fredrickson

Dave & Kris Frisbie

James & Karole Fuller

Charlie & Connie Funk

Gary Gavin & Rosemary

Regan-Gavin

Kit Gerken

Helen Goldstein

Daryl & Nancy Granner

Scott & Patty Hansche

Soni Harney

Sohan & Shelagh Hayreh

P.H. Heckel

Mark & Margaret Heffron

Paul & Margaret Heidger

Judith Hendershot

Mike Hensch

John & Beth Hieronymus

Doug Hill

Charlene Hinrichs

Rick & Jan Hollis

Gretchen Holt & Lyell D. Henry, Jr.

Al & Jean Hood

Lou Rae Hoogerwerf

H. Dee & Myrene Hoover

Linda & Nathan Hopkins

Jeffrey & Alycia Horras

Sidney & Elizabeth Huttner

Lynette & Dave Jacoby

Leslie & Bonnie Jenkins

Dwight & Pat Jensen

Beverly & Frederick Johlin

Wayne & Donna Johnson

Phillip E. &

Jo Lavera Jones

Pamela Kacmarynski

George & Marian Karr

Paula Kasper-Lundahl

The Kenneth K. Kinsey

Family Foundation

John & Claudia Knutson

John & Patricia Koza

Jill Kromminga

Tim & Sarah Krumm

Mary Lea & Richard Kruse

J. Kenneth & Ruth Kuntz

Doug & Judy LaBrecque

Wes & Brenda LaMarche

Catherine & Jim Lane

Scott & Michele Larson

Steve & Karen Laughlin

Val & Lois Lembke

Karl & Vicki Lonngren

Bonnie Rae Love

Laura Lovell

Lowell Luhman

Christine M. Luzzie &

Patrick B. Bauer

Chris & Sheri Lynch

Janet Lyness &

John Wadsworth

Nancy Margulis

Kathy & John Maxwell

Yvonne McCabe

Mike & Sara McCleary

Jim & Mary McCue

Kim & Melanie McDonald

John Menninger

Stan Miller & Kathy Polvi

Jay & Leslie Mowry

Kevin & Nan Nerad

Steve Noack

Lee Noel



**LOYAL CONTRIBUTORS,
CONTINUED**

Carrie Z. Norton
William Olin Jr.
Polly & Armond Pagliai
Brad & Ann Parker
Michelle L. Payne
William & Doris Preucil
Darin & Jennifer Price
Dean & Donna Price
Sherri & Jon Proud
John & Sharyn Reitz
David & Noreen Revier
Janet Rich
Thomas M. Robinson
Tom & Carol Rosenberger
James & Ann Ruby
Gerard & Carolyn Rushton
Kay Schillig
John & Jan Schneider
Sandra Schuldt
Lisa & Alberto Segre
Meredith Sewell
Mary & Roger Simpson
Marvin Sims Jr.
Rina & Richard Sjolund
Steve & Pat Smith
Nancy Spalj
Dr. & Mrs. William Stanford
Flo & John Stockman
John & Elizabeth Stratton
Rod Sullivan &
Melissa Fath
Kim Thurman
Richard Tucker
Anne & Byron Vandenberg
Peter & Kathryn Wallace
Lisa Weigandt
West Family Fund
J. Patrick & Betty White
Scott Whitmore
Catherine Wilcox
Charles & Mary Wolfe
Steve & Sue Wolken
Joan Wuest
Anonymous (24)



**Tocqueville
Society**

\$10,000 AND ABOVE

Gerry Ambrose & Kristin Hardy
Lanny Benishek
Kenneth Brown & Amy Kristof-Brown
Richard Ferguson
Robyn Hepker
Audrey & Jeff Knox
Tim & Sarah Krumm
Hass & Ann Marie Machlab
Katherine Mathews & Edward Silagi
Jane McCune
Jim Mondanaro
James & Jean Neumann
David & Noreen Revier
Jennifer Robinson & Michael Muellerleile
Tom Rocklin & Barbara McFadden
Janet Schlechte, M.D.
Dionne Skeete
Douglas K. & June E. True
Eric & Tricia Van Roekel
Marsha Wolff
Anonymous (1)



Leadership Circle

PLATINUM: \$7,500–\$9,999

Matt & Jenny Henderson
Frank Mitros & Monica Maloney-Mitros
Joe & Jaclyn Townsend

GOLD: \$5,000–\$7,499

John Beldon Scott & Katherine Tachau
Maurine Braddock
Bradley & Denise Britigan
Daniel Caplan
Thomas & Shari Davis
Len Devaisher
Bart & Julie Floyd
James P. Hayes
Charlene Hinrichs
Chris & Sheral Jensen
Beverly & Frederick Johlin
George F. Johnson
Bill & Judith Klink
Katie Knight
Michael & Chelle Lehman
Janet Lyness & John Wadsworth
Jim & Mary McCue
Jay Semel & Joan Kjaer
Anonymous (4)

SILVER: \$2,500–\$4,999

Terri & Terry Anderson
Gary & Connie Barta
Christine Bellomy
Justin & Emily Bishop
Warren & Maryellen Boe
Diane Dahl-McCoy & James McCoy
Michael & Donna D'Alessandro
Ethan Domke & Mindy Olson
Bob & Jane Downer
Nile & Lois Dusdieker
Jane Engeldinger & Michael W. O'Hara
Geoff & Jenny Fruin
Charlie & Connie Funk
Janet Godwin
Helen Goldstein
Sohan & Shelagh Hayreh
Mark & Margaret Heffron
Amy & Eugene Henderson

John & Mary Henk
Gretchen Holt & Lyell D. Henry, Jr.
Jan Jensen & Julie Fitzpatrick
Susan Johnson & Ann Rhomberg
Angela Kelly
Jim & Anne Kelly
Michael W. Kennedy & Michelle R. Kennedy
The Kenneth K. Kinsey Family Foundation
Phillip E. & Jo Lavera Jones
Ann & Ed Lorson
Chris & Sheri Lynch
Mike & Sara McCleary
John Menninger
Kevin & Julie Monson
Rick & Tracey Oehler
Polly & Armond Pagliai
Jim & Beth Peterson
James & Laura Ponto
Jean & Tom Reed
Duff & Libby Ridgeway
Matthew & Brianne Seberger
Jack & Anne Stapleton
Mary & Edwin Stone
Sonia Sugg & Joel Shilyansky
Rod Sullivan & Melissa Fath
Marty & Cindy Tunning
Anne & Byron Vandenberg
Jason & Traci Wagner
Peter & Kathryn Wallace
Tony & Susan Weinschen
Mary Westbrook
Mark Wilson
Gail & Frank Zlatnik
Anonymous (4)

BRONZE: \$1,000–\$2,499

Mary Abboud-Kamps
Gabe & Anne Aguirre
Bill & Fran Albrecht
Kathleen Andersen
Dawn & Lars Anderson
Susan & Jose Assoulina
Charles Astorino

Travis Bails
Gary & Diane Baumbach
Jackie Blank
Michael Bloomquist
Paula Brandt
Richard & Phyllis Braverman
Peter Brokaw
Matt Brown
Tom Burnette
Angie & David Bywater
Mike & Carrie Canning
Joyce Carman-Baldus
Joyce & Steven Carroll
Daniel Clay
Bryan & Ginny Clemons
Catherine Cole
Ty & Jenn Coleman
Kevin & Amy Collins
John Colloton
Jim & Jennifer Conard
Susan Connell & Mike Kiely
Howard Cowen
Jennifer Dahm
Pat & Warren Darling
Jeff Davis
Terri Davis
Lauren Debronsky
Michael Debronsky
LaTasha DeLoach
Willie & Joseph DeWaard
Blake & Rachael Dirksen
William & Joanne Dochterman
David & Barbara Drake
Jane Drapeaux
Susan Dulek
Brad & Stephanie Dunlap
Michael & Carla Durkee
John Dwyer
Richard Dyson
Travis Eagle
Shawn Ervin
Todd Fanning
Linda & Ed Farkas
Daniel Feldt
Patti Fields
John & Randee Fieselmann
Dorina Forkenbrock
Robert & Sylvia Forsyth
Karin Franklin



LEADERSHIP CIRCLE, CONTINUED

Kellie Fruehling
Sherril P. Furman
Gary Gavin & Rosemary
Regan-Gavin
Kathryn Geiken
Tom & Becky Gelman
Ken Gillaspie
Ingrid & Jeff Goldenstein
Daryl & Nancy Granner
Brian Greer
Melissa Griffis
Grant Gustafson
Ms. Beth A. Hanna
Heidi Harmon
Soni Harney
Steven Harris
Jason Havel
Kelly & Nancy Hayworth
Ryan & Stephanie Heiar
Patricia Heiden
Donald Heistad
John Henson
John & Beth Hieronymus
Pamela & Terry Hinman
Tom & Jeri Hobart
Rick & Jan Hollis
Kristin Hood
Eric Hudson
Sidney & Elizabeth Huttner
Jason Jackson
Karen Jennings
Keith & Connie Jones
George & Marian Karr
Paula Kasper-Lundahl
Shawn Kelly
Lee & Carol Kirsch
Claudia & Dennis Kline
Ron & Danelle Knoche
Bonnie Knuckey
Nicole Knudtson-Davies
John & Patricia Koza
Jaclyn Kretschmar
Mary Lea & Richard Kruse
Wes & Brenda LaMarche
George & Phyllis Lance
Douglas & Alice Langbehn
Scott & Michele Larson
Steve & Karen Laughlin
Ken & Lorie Leo
Barcey & Steven Levy
Todd Liddell
Dao Thong Lim
Ina Loewenberg
Timothy & Marsha Lowe
Juan & Dora Lugo

Christine M. Luzzie &
Patrick B. Bauer
Diana Lynch
Barbara Markham
Lynette Marshall & Jeffery
Ford
Sally Mathis Hartwig
Chad & Julie Maxfield
Yvonne McCabe
Kim & Melanie McDonald
Tami McGary
Samantha McSorley
Jodessa & Keith
McSweeney
Todd & Kellie Means
Andres Medina
John P. Mehegan & Pamela
K. Geyer
Jerry & Patricia Meis
Bob Michael & Cathy
Zaharis
Chad Michel
Laura & Andrew Miller
Stan Miller & Kathy Polvi
Tara Minetos
James Mitchel
Alicia & Christopher Mitros
Thomas Mittman & Laura
Stunz
Susan Moore
Michael Muhlenbruch
Anne Munn Mangano
Jeffrey Murray & Ann Marie
McCarthy
Brenda Myers
Alan Nagel & Kristin Arnold
Nagel
Todd & Dana Nash
Henry E. Nathanson
Margaret Nelson
Polly Nichols Marshall
Ellen Nickel
Cindy Noack
Steve Noack
Wendy Nolan
Mark & Leslie Nolte
Carrie Z. Norton
Arthur & Ginger Nowak
Russell & Martha Noyes
EJ O'Donnell-Lines
Brian & Michele Olesen
Kevin Olszewski
Lynda Ostedgaard
Gary & Nancy Pacha
Karla Palermo
Janene Panfil & Don
Stumbo
Jason Paulios
Michelle L. Payne
Pamela Peters

Maxwell Petersen
Michael & Catherine Pugh
Pam & Steve Quigley
Steven Rackis
Kalyaan & Arthy Rao
Christi Regan
Roger & Barb Reilly
John & Sharyn Reitz
Penny Rembolt
Shawn Rhinehart
Thomas M. Robinson
Tracy Robinson
Paul D. Roe
Steve & April Roe
Tom & Carol Rosenberger
Jim & Janet Ross
Bonnie & Joshua Ruby
Gerard & Carolyn Rushton
Kathryn Sarsfield
Yutaka & Becky Sato
Aaron & Shana Schaefer
Josh & Jessica
Schamberger
Janie & Steve Schomberg
Carol Scott-Conner & Harry
Conner
Dwight & Melinda
Seegmiller
Benjamin Seely
Kay & Clyde Seery
Lisa & Alberto Segre
Kevin Shaw
Siroos & Patti Shirazi
Elias Shiu
Dale Simon
Kathryn Simon
Mary & Roger Simpson
Gary Sims
Timothy & Lynn Skopec
Brandon Smith
Dan & Rachel Smith
Diane & Michael
Sondergard
Dr. & Mrs. William Stanford
Tande Stenbak
Marty & Charlotte Stoltzfus
Anna & Jeff Stone
Madison Stott
John & Elizabeth Stratton
Sue Strauss
Mike & Lori Streb
Keith Stroyan
Alan L. Swanson
Liz Swanson
Liz & Steve Tovar
Greg Turner
Dr. Ann M. Valentine
Brooke Valletta
Stephen Vlastos

Shane Volz
Andreas Wahle
Robert & Maureen Wallace
Laura Walters
Zachary Wardenburg
Karen Weeks
David Weiss & Ute Muh
Taralynne Werthmann
West Family Fund
Timothy Whitaker

Tim Wilkey
Brad Williams
Nancy B. & Craig N. Willis
Barbara Wilson
Charles & Mary Wolfe
Steve & Sue Wolken
James Woodin
Jennifer & Mark Wyatt
Anonymous (34)

100th Year Campaign Donors

Bob & Jane Downer
Matt & Jenny Henderson
George & Marian Karr
Tim & Sarah Krumm

Hass & Ann Marie Machlab
David & Noreen Revier
Douglas K. & June E. True
Anne & Byron Vandenberg

Recognition levels include: Annual Campaign and In-Kind donations.

In Memory

Edward Allgood
Jane Anderson
Craig Bancroft
Dale Bieber
David Bills
Dwayne Bourret
David Brogla
Bert Brook
Carol Calkins
David Carew
Alfred Carr
Connie Champion
Elizabeth Clarahan
Gloria Dunlap
Lolly Eggers
William Elsner
Gary Fabian
Todd Farrell
Linda Fink
Lester Gardner
Doug Goodfellow
Donald Gurnett
Helen Heck
Charles Hesse
Pat Hobson
James Holland
Timothy Holman
Sandy Hora
Marsha Hucke
Thomas Hulme

Ronald Jans
Alberta Kos
Jeanette Lalor
Paul Langehough
Stefan Loening
John Milder
Dennis Miller
Marguerite Morey
Rhonda Muhlenbruch
Jim Organ
Allan Ostrem
Duane Patterson
Linda Potter
Ira Rapson
Gretchen Rogovin
Jan Rutledge
Pat Schnack
Nancy Shaffer
Victoria Solursh
Carol Spaziani
Robert Squires
Arnold Swails
David Tiffany
Jerry Walker
Nellie Weber
Robert Weir
Herb Wilson
Edie Yerington
Fern Yoder

